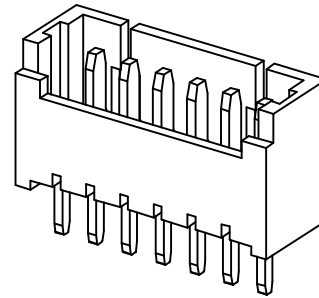
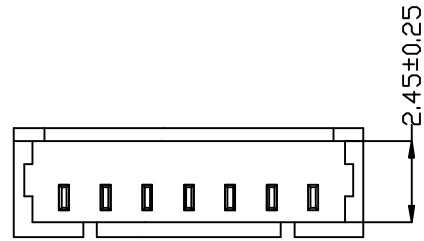


1 2 3 4 5 6 7 8 9

F

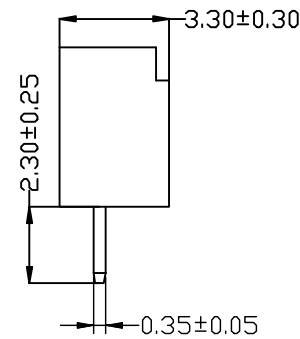
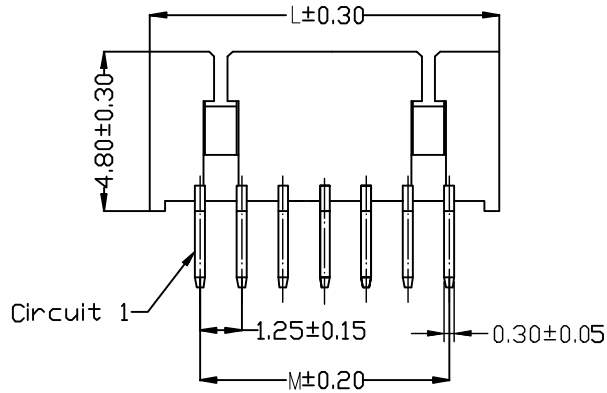


Specifications:  
 Current rating:1A AC/DC.  
 Voltage rating:125V AC/DC  
 Temperature range:-40°C~+105°C.  
 Contact resistance:20MΩ Max.  
 Insulation resistance:100MΩ Min.  
 Withstanding voltage: 500V AC/minute.  
 Material:PA46.UL94V-0.

E

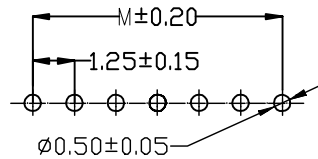
No of PIN/Row	Dimensions	
	M	L
02	1.25	4.25
03	2.50	5.50
04	3.75	6.75
05	5.00	8.00
06	6.25	9.25
07	7.50	10.50
08	8.75	11.75
09	10.00	13.00
10	11.25	14.25
11	12.50	15.50
12	13.75	16.75
13	15.00	18.00
14	16.25	19.25
15	17.50	20.50
16	18.75	21.75

D



C

B



PCB LAYOUT

Ordering Information

G WDA106-XX XX A 001 F X B X

No. of Pins per Row 02~16      Standard Plating 01=Tin      Color 2=White ...      Standard Packing N=PE Bag

Selective Plating 02=Gold Flash 05=Gold Flash/Tin

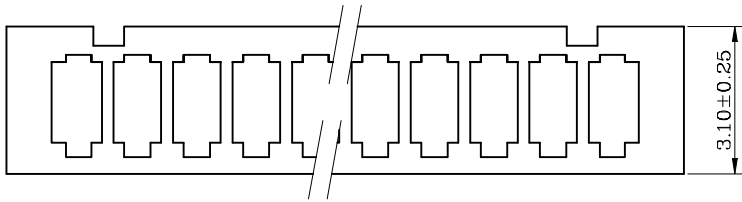
A

<p>Website:www.greenconn.com E-mail:sales@greenconn.com</p>	<p>3RD.ANG PROJ.</p>	GENERAL TOLERANCE		<p>DESIGNED:</p>	<p>DATE:</p>	<p>DWG. NO. GWDA106-CA1FB</p>	<p>TITLE. 1.25 Pitch Wafer</p>		
		X'±3.0'	X.±/					X'±2.0'	.X±0.30
REV. A	UNIT. mm	SCALE. 1:1	PAGE. 1/1	.XX'±1.5'	.XX±0.25	APPROVED:	DATE:	.XXX'±1.0'	.XXX±0.15

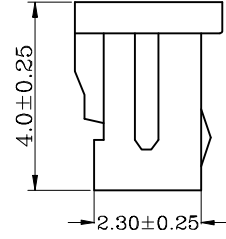
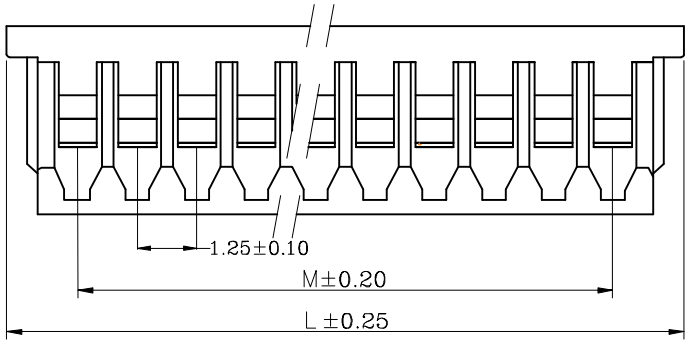
1 2 3 4 5 6 7 8 9

1 2 3 4 5 6 7 8 9

F  
E  
D  
C  
B  
A



NOTES:  
 CURRENT RATING:1A AC/DC.  
 VOLTAGE RATING:125V AC/DC  
 TEMPERATURE RANGE:-40°C~+105°C.  
 CONTACT RESISTANCE:20MΩ Max.  
 INSULATION RESISTANCE:100MΩ Min.  
 WITHSTANDING VOLTAGE:500V AC/MINUTE.  
 MATERIAL:NYLON 66.UL94V-0.



No of Pin/Row	Dimensions	
	M	L
02	1.25	4.25
03	2.50	5.50
04	3.75	6.75
05	5.00	8.00
06	6.25	9.25
07	7.50	10.50
08	8.75	11.75
09	10.00	13.00
10	11.25	14.25
11	12.50	15.50
12	13.75	16.75
13	15.00	18.00
14	16.25	19.25
15	17.50	20.50
16	18.75	21.75

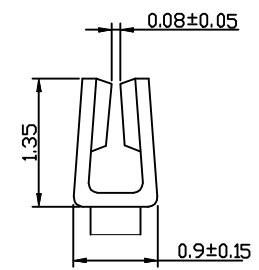
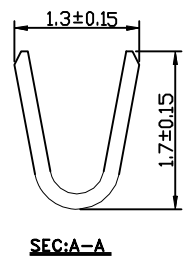
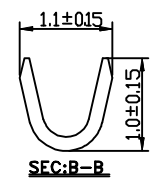
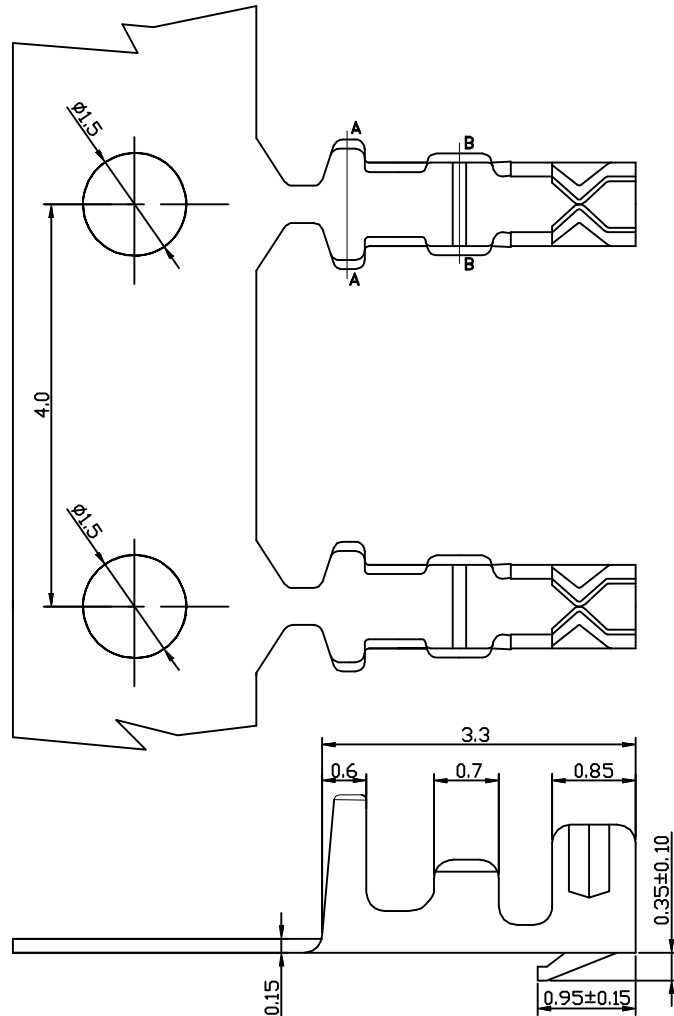
**GHD321 - XX A X**  
 No. of Pin/Row: 02 ~ 16  
 Material/Color: M=Nylon66/White

 Website: www.greenconn.com E-mail: sales@greenconn.com	3RD.ANG PROJ. 	GENERAL TOLERANCE		DESIGNED:	DATE:	DWG. NO. GHD321-HA	TITLE. <b>1.25mm pitch housing</b>
		X: ±5.0'	X: ±				
.X' ±3.0'	.X ±0.30	APPROVED:	DATE:				
.XX' ±2.0'	.XX ±0.25						
REV. A	UNIT. mm	SCALE. 1:1	PAGE. 1/1	.XXX' ±1.0'	.XXX ±0.15		

1 2 3 4 5 6 7 8 9

1 2 3 4 5 6 7 8 9

F  
E  
D  
C  
B  
A



**Specifications:**  
**1. Material: Phosphor Bronze**  
**2. Wire Range: AWG#28-32**  
**3. Insulation O.D.: 1.0mm(Max)**

**Ordering Information**

**GRD112 - 01 XX AB**

Standard Plating  
01=Tin

Materials  
AB=Phosphor bronze

<p>Website: www.greenconn.com E-mail: sales@greenconn.com</p>		3RD.ANG PROJ. 	GENERAL TOLERANCE		DESIGNED:	DATE:	DWG. NO. GRD112-T1	TITLE.	
			X. 等 /	X. ?					CHECKED:
REV. A	UNIT. mm	SCALE. 1:1	PAGE. 1/1	.XX 等 /	.XX?.25	APPROVED:	DATE:	PART NO. GRD112-01 XX AB	
				.XXX 等 /	.XXX?.15				

1 2 3 4 5 6 7 8 9